

INSTALLATION & USE INSTRUCTIONS

Please read this instruction carefully before use

- This appliance is not intended for use by persons (including children) with reduced physical, sensory or mental capabilities, or lack of experience and knowledge, unless they have been given supervision or instruction concerning use of the appliance by a person responsible for their safety.
- Children should be supervised to ensure that they do not play with the appliance.
- If the supply cord is damaged, it must be replaced by the manufacturer, its service agent or similarly qualified persons in order to avoid a hazard.
- WARNING:** In order to avoid a hazard for very young children, this appliance should be installed so that the lowest heated rail is at least 600 mm above the floor.
- This appliance can be used by children aged from 8 years and above and persons with reduced physical, sensory or mental capabilities or lack of experience and knowledge if they have been given supervision or instruction concerning use of the appliance in a safe way and understand the hazards involved.
- Children shall not play with the appliance.
- Cleaning and user maintenance shall not be made by children without supervision.

Introduction

Dear user:
Thank you for using the DAGEN (Dagen Sanitary Ware) electric towel rack. To ensure proper operation, please read the manual carefully and keep it safe before using. This manual is only applicable to the matching electric towel rack. All contents in this manual are for users' reference during use and maintenance. The specific information should be based on the actual product. The pictures are for reference only. If you have any questions during use, please contact the our customer service.

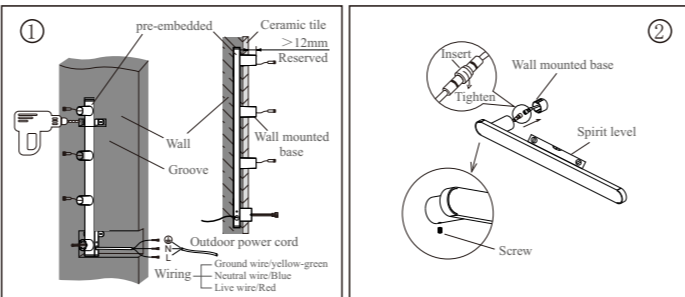
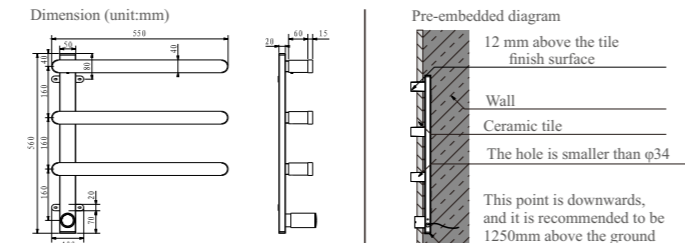
(Any changes to the technical specifications in this manual or updates to the product will not be notified separately.)
(Special note: All contents on this manual have been carefully checked. If there are any printing errors or misunderstandings regarding the content, the company reserves the right to explain.)
Warning: To avoid causing harm to the baby, the installation of the equipment should ensure that the lowest heating rack is at least 600mm above the ground.

Product Specifications

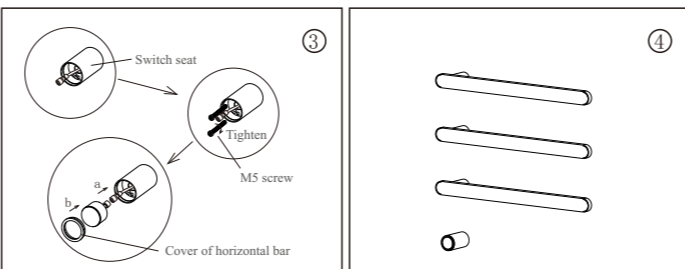
Product Name	Electric towel rack	Model	DDF0301/DDF0401/DDF0501
Size	15W per each	Power rate	560/720/880*500*95mm
Requency	50-60Hz	Voltage rate	220-240V
Heating-up period	3-15mins	Product temperature	50°C±5
Waterproof	IPX4	Installation	Concealed installation

Configuration list & Installation Method

Switch control	Embedded parts qty	Main rails qty	Allen key	Expansion screw
1 PCS	1 PCS	3/4/5 PCS	1 PCS	1 SET



1. Reserve grooves in the wall installation position, depth, width and height according to the figure, the end face of the installation seat must be prominent 20-25mm high ceramic pieces;
2. Adjust the level of the embedded parts in all directions, mark the four position holes, drill holes with impact drills, insert expansion screws, lock the embedded parts with self-tapping screws, and confirm the level of the embedded parts in all directions again;
3. Make sure to cut off the power supply. Correctly connect the ground wire, neutral wire and live wire of the embedded parts in all directions into the power line entering the house. Take all necessary waterproof and moisture-proof protective measures.
4. Embed the embedded parts with cement mortar, attach the ceramic tiles, and pay attention to protecting the threaded holes. Keep the installation base and power cord plug-in clean and free of debris.
1. Connect the exposed plug-in of the installation seat with the plug-in of the crossbar seat, and tighten the waterproof nut in place.
2. Insert the connected wires back into the installation seat and the crossbar seat, and push the crossbar into the groove on the side of the installation seat on the wall in a straight direction.
3. Hold the crossbar seat and use an Allen Key to tighten and fix the set screws



1. Remove the switch base, turn the horizontal rod base cover counterclockwise (left) to unscrew it, then place it back in the packaging box for future use.
2. Pull out the switch connector inside the fixing base and pass it through the circular hole inside the switch base. Then, insert the switch base towards the side groove of the installation base in the forward direction.
3. Hold the switch base firmly, insert two M5 long screws into the circular holes, and then lock them with a hexagonal key.
4. Align the switch connector of the fixing base with the power switch of the switch base cover according to the marking lines.
5. To prevent the switch base cover from directly being screwed in, causing the connecting wires to be overly tightened and resulting in malfunctions, suspend the switch base cover to rotate counterclockwise (left) by about 5 turns, then screw it in rightward (clockwise) until it is tightened against the internal threads of the switch base.
1. After completing the above steps, the entire three-bar electric towel rack is installed.
2. Connect the power supply, press the switch, and conduct an electrical test for 15 to 30 minutes.
3. Gently touch the horizontal or vertical bars of the electric towel rack. Your hand should be able to feel that the horizontal bar is slightly warm.
4. After an interval of 30 to 40 minutes, gently touch the horizontal bar again. The temperature should be stable and no longer rising. The product can be used normally.
5. After the electrical test is completed, be sure to turn off the power.

Instruction for use

Intelligence digital display



After the product is powered on, press and hold the power button for 3 seconds to turn it on. Touch the power button briefly to set the time from 1 to 9 hours, and then press it again to set the constant temperature to 55°C.

Maintenance Instruction

- Before cleaning the electric towel rack each time, be sure to unplug the power and cool down;
- Do not immerse the electric towel rack, power cord or power plug in water;
- Ensure that the electrical wiring is dry;
- Wipe the outer shell of the electric towel rack with warm water and a soft towel (or sponge);
- Do not use abrasive powders, cleaning agents, oils or alkaline cleaners for cleaning;

Note: Remember not to clean the towel rack with metal balls or other rough and hard cleaning cloths to avoid damaging the surface.

After-sales Notes

- From the date of purchase, users can enjoy a three-year frame warranty and a one-year warranty for electronic components (the appearance is not covered by the warranty).
- To claim warranty, present both the warranty card and valid purchase receipt. No warranty will be provided if either document is not submitted.
- This product can bear 10kgs; hanging overweight items is prohibited.
- The following situations are not covered by repair services. We only provide repair services but charge labor and material costs:
 - All human-induced damage, including but not limited to damage caused by use in abnormal working environments, failure to follow instructions, and improper storage.
 - Users who disassemble the device without authorization, perform repairs or modifications independently, or have it serviced by unauthorized entities; or those without a warranty card or valid documentation;
 - Damage to the purchased machine due to improper transportation or other force majeure events (such as floods, fires, lightning strikes, or earthquakes);
 - Product damage caused by improper use, impact, operation, or installation due to water ingress or exposure to water, as well as malfunctions resulting from non-compliant usage.
- The complimentary items are not included in the after-sales service.

Notes for Attention

- This product is only for drying washable textiles. Fabrics that are prone to fading or made of silk must not be dried using this product.
- The product must be connected to a power supply that matches the rated voltage indicated on the electrical label for use.
- This product should not be used if its heating elements or casing are damaged.
- The product must not be connected to the power supply before maintenance or cleaning is completed.
- If the internal power cord of the product needs to be modified or the power cord is damaged and needs to be repaired, it must be sent to the manufacturer for replacement or to a service agent authorized by the manufacturer for replacement to ensure safety and avoid injury.
- If external electrical wiring needs to be repaired, the power supply must be completely cut off. Persons without electrical safety operation experience should use this product under the supervision and guidance of professionals and ensure safety.
- This product must not be used by children as a toy, and children must not use this product without parental supervision.
- Do not use products not recommended by our company to avoid damaging the product.
- This product is only for indoor use and must not be used outdoors.
- Please disconnect the power supply in time when encountering thunderstorm weather and do not use it.
- When the displayed temperature exceeds 60°C, it is recommended to remove the dried items placed on the towel rack.
- When the displayed temperature reaches 65°C, do not place items and do not touch the human skin easily to avoid burns. The recommended optimal temperature for this product is 50°C.
- If there are scratches, bumps, or other problems on the surface of the product, a return application should be made within 15 days from the date of purchase. Failure to do so will be regarded as an accidental damage.
- If you need to return or exchange the product, ensure that the equipment and its accessories are complete and intact, ensure the safety of the transportation during the return or exchange process, and fill out this card and send it together with the required returned or exchanged goods or accessories to our company or the corresponding after-sales service outlet.
- Please keep this card properly

Warning

- Contact with the skin for a long time. May cause low temperature burns;
- The appliance shall be used only for dry and washed textiles to prevent cleaning with corrosive materials;
- Do not use water to put out appliance fire before power is cut off.

Notice and Explanation of the "Regulations on the Recycling and Disposal of Waste Electrical and Electronic Appliances" In order to protect environment, when the user no longer needs the product or the product life ends, please comply with the relevant national laws and regulations on recycling and processing of waste electrical and electronic products, and hand them over to the local manufacturers with nationally recognized recycling and processing qualifications for recycling and processing.

Certificate of Conformity and Warranty Card

Certificate

product name: See the packaging details

product item: See the packaging details.

Inspector: _____

Manufacturing date: _____

Warranty Card

Our company fulfills the commitment of providing a three-year warranty for the frame and a one-year warranty for the electronic components, and also provides lifetime maintenance services.

Name: _____

detailed address: _____

zip code: _____ Tel: _____

Purchased products: _____ purchased date: _____

Selling outlets: _____

fault phenomenon: _____

failure cause: _____

- ✘ The warranty items listed in this warranty card are limited to the free items covered by the warranty card for repair purposes.
- ✘ If the product fails during the warranty period, the user should present the warranty card to the sales outlet to request after-sales service.